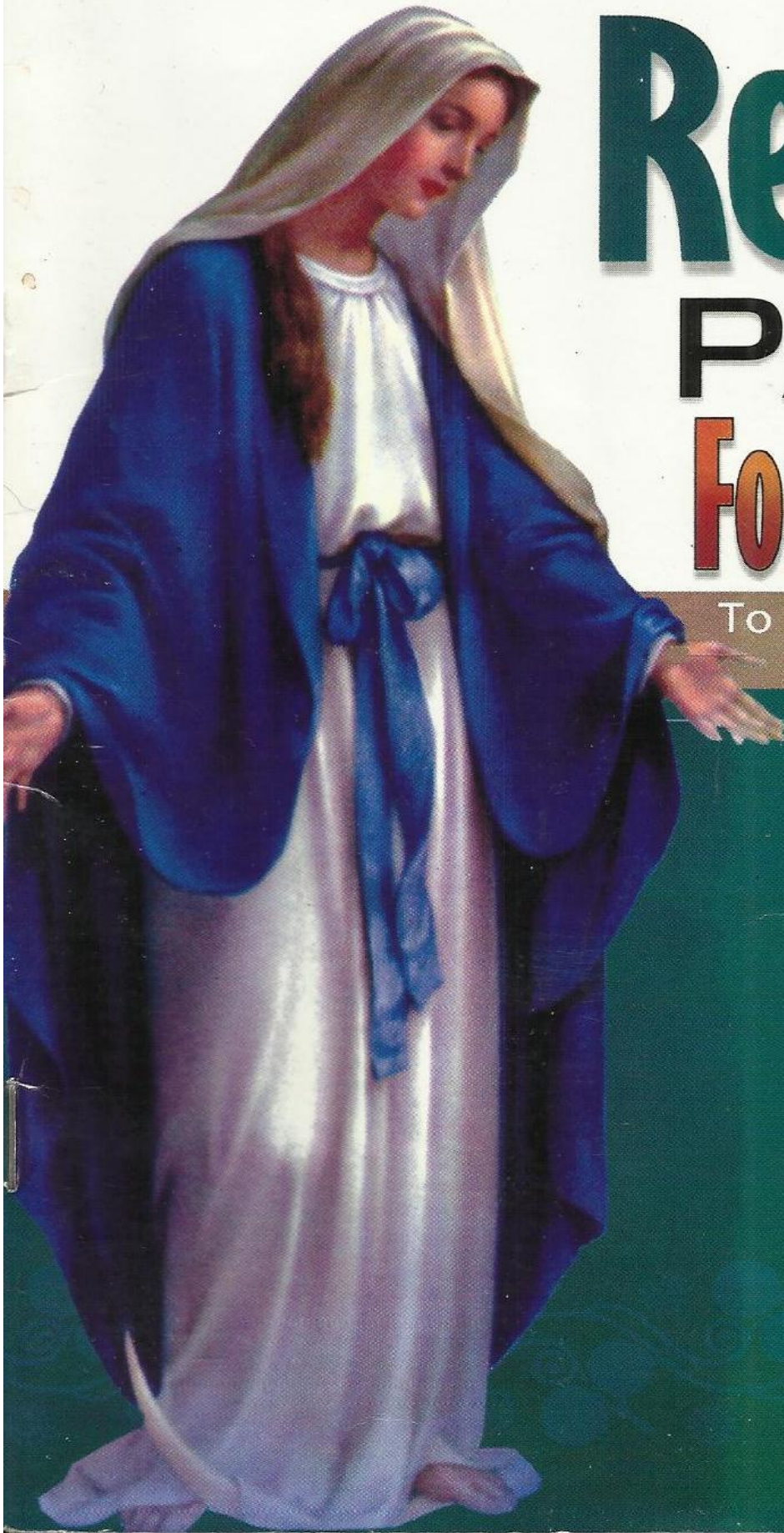


**REGINA PACIS FOUNDATION
PO BOX 1031
OKPODUMA NWOFE
IZZI LOCAL GOVERNMENT AREA
EBONYI, STATE NIGERIA**

Email: reginapacisfoundation@gmail.com



Regina PACIS Foundation

To Uplift Humanity

VISION AND MISSION STATEMENT

VISION

TO UPLIFT HUMANITY

MISSION

To reduce poverty among the people, improve educational opportunities through scholarship awards, agricultural activities, micro credit and capacity building especially among women.

1. EXECUTIVE SUMMARY OF REGINA PACIS FOUNDATION WOMEN EMPOWERMENT SCHEME (VISION 2017-2023)

INTRODUCTION

Regina Pacis foundation is a non-governmental, non-profit making organisation, registered with the corporate affairs commission on 13th of November 2006 with RC number 674696. The liability of the members is limited by guarantee.

The registered office of Regina Pacis foundation has its national headquarters located at Nwofe, Agbaja, Izzi local government area of Ebonyi State, Nigeria. It has its project sites and offices in some parts of the country.

VISION

Uplifting humanity.

MISSION

To reduce poverty among the people, improve educational opportunities through scholarship awards, agricultural activities, micro credit and capacity building especially among women.

OBJECTIVES

Regina pacis foundation was established with the following objectives: -

- a. Reduction of poverty.*
- b. Improve educational opportunities through scholarships.*
- c. Improve agricultural activities through improved farm inputs and farming methods innovations.*
- d. Improve economic independence of the youths through vocational training.*
- e. Create awareness on tourism, training on computer literacy skill on food production and packaging.*
- f. Micro credit loans.*
- g. Provision of portable water.*
- h. Provision of food processing factories.*
- i. Improve farm seedlings.*

j. Educational and enlargement activities through workshops, seminars and conferences.

FOUNDER'S PROFILE

SIR (DR) EDWARD NKWEGU OFR KSJ



He was born on 28th of August 1960 in Ebonyi State of Nigeria. He obtained his First School Leaving Certificate in 1980 and Senior School Certificate Examination in 1991. He holds a Bachelors' and Master of Science Degrees in Architecture, another master's degree in environmental management from Enugu State University of Science and Technology. He obtained master's Certificate in Strategic Leadership from Albion College London. He has an Honorary Doctorate Degree in Management from the Commonwealth University of Belize in 2013. He is happily married with children.

A member of the Knights of St. John International, and the Nigerian Institute of Architects.

He is a multi-billionaire entrepreneur and philanthropist par excellence.

The Chairman of the following organizations.

- Edon (Nig.) Ltd.
- Edon Aluminum & Manufacturing Company (Nig.) Ltd.
- Barcelona Hotels & Gardens (Nig.) Ltd. Enugu & Abuja
- Nkwegu and Partners (Nig.) Ltd.
- Ndiagu Microfinance Bank Ltd. Abakaliki

Chairman emeritus Abakaliki Capital Territory Development Board.

Sir Edward Nkwegu received the award of the Officer Order of the Federal Republic of Nigeria (OFR).

He has also received several meritorious awards including but not limited to the following.

- Merit Award, Institute of Professional Administration in Africa.
- Award of Excellence, National Association of University of Nigeria Nsukka Undergraduates.
- Merit Award of Excellence, Nigeria Union of Journalists, Ebonyi State Chapter.
- Vocational Service Award of Rotary Club International, District 9200, Masaka, Uganda.
- Honorary Award of Law Students Association of Nigeria, EBSU Chapter.
- Award of Knights of St. John International, Enugu Grand Commander.

Among his Chieftaincy titles include.

- Nwachimere of St. Thomas Parish, Nwofe.
- Ekuruo' Ulo 1 of Ndioga Village
- Chinyelugo of Catholic Women Organization, Nwofe
- Ide of Catholic Women Organization, Abakaliki Diocese
- Onwa na Etiri Oha 1 of Knights of St. John Commander, 446 Abakaliki
- Okwoha 1 of Izzi Land

He is the founder of Regina Pacis Foundation, a non-profit company that helps the poor. His literary works include A Bestseller "The Secret Rituals of Millionaires", a book published in 2008. He loves reading, writing and playing Lawn tennis.

CO-FOUNDER'S PROFILE

LADY MARY NKWEGU LSJI



She was born on the 7th of August 1973 and attended Uburu Amachi Primary School, Abakaliki, Ebonyi State. She obtained her First School Leaving Certificate (FSLC) in 1980. From there, she attended Holy Ghost Secondary School, Abakaliki and obtained her Senior School Certificate Examination (SSCE) in 1993.

Four years later, she graduated with an Ordinary National Diploma from Institute of Management & Technology {IMT}, Enugu. She obtained a Bachelor of Science {Hons} in Accountancy in 2007 and later obtained a master's certificate in Strategic Leadership in 2012 from Albion College London.

She is an Associate Member of The Certified Institute of Treasury Management and Corporate Finance of Nigeria, she is a Christian and married to Dr. Edward O. Nkwegu {OFR} with children. She is a civil servant with Independent National Electoral Commission {INEC} as the accountant I.

Holds a chieftaincy title- “Nneoha I of Izzi land”

A lady Knight of St. John International laux 382.

She holds various positions such as;

Co – Founder of Regina Pacis Foundation, Abakaliki

Chairman of Okwo-oha Micro Finance Bank Ltd, Iboko.

She loves Farming, Cooking and Playing Lawn – Tennis.

TRUSTEES AND MEMBERS

Regina Pacis has among her trustees/ members, reputable and sound minded individuals; Catholic priests; royal fathers and other professionals in other areas of interest.

PROJECTS

Regina Pacis in the last 20 years has embarked on life changing projects in different parts of Nigeria which include; provision of micro-credit loans to the active poor especially women and youths, provision of potable water for the people, alleviating hunger through provision of food processing factories and supply of improved farm seedlings to the less privileged farmers, educational and enlightenment activities through seminars, workshops and conferences in other to ensure human capacity building and training. Regina Pacis believes in transparency, improvement of everyone's quality of life and respect for human values. Her membership cuts across cultural and socio – economic diversity.

CONTRIBUTIONS

Government agencies, corporate and private institutions and individuals have contributed to the development of the foundation. They include but not limited to the following: -

- ✓ EDON Nig. LTD.
- ✓ BARCELONA HOTELS AND GARDENS LTD.
- ✓ BARCELONA INTERNATIONAL LIMITED.
- ✓ CATHOLIC DIOCESE OF ABAKALIKI.
- ✓ OKWO-OHA MICROFINANCE BANK.
- ✓ NDIAGU MICROFINANCE BANK.
- ✓ FIRST BANK NIGERIA LIMITED.
- ✓ NKWEGU AND PARTNERS LIMITED.
- ✓ ROTARY CLUB ABAKALIKI.
- ✓ RECREATION CLUB ABAKALIKI.
- ✓ WHITE CLOUD AND FREMONT ROTARY CLUB, USA.

PRODUCTS

Micro credit schemes, scholarships, skill acquisitions, agricultural schemes and referrals aimed at poverty alleviation.

3.0 BRIEF HISTORY OF REGINA PACIS FOUNDATION

Regina Pacis Foundation (RPF) is a non – governmental, non – profit making organization registered with the Corporate Affairs Commission, Abuja, Nigeria, on the 13th day of November 2016 with RC 674696.

Regina Pacis is a Latin name which means Queen of Peace. The Foundation was established as a charitable organization. The founder, members, associates and friends offer thanksgiving to God Almighty every third week of November annually in Abakaliki Diocese. They were using the avenue to alleviate poverty, promote youth development and empowerment among the people of Ebonyi state. This was done through scholarship awards to the less privileged people, alleviating poverty through skill acquisition programs, provision of agricultural inputs to the people and other forms of capacity building among women and youths – micro credit schemes. As the Foundation continued to grow, the need for registration arose and people of like minds formed the Board of Trustees. Regina Pacis foundation was incorporated on the 13th day

of November 2006 as a non-governmental organization and has spread across the country alleviating poverty to uplift humanity.

RPF till date offer thanksgiving to God as she celebrates her annual 7day festival in the month of November. This Program brings people from all walks of life to Regina Pacis Villa in Okpoduma, Nwofe in Izzi Local Government area of Ebonyi State. The vision is to cover the whole Federal Republic of Nigeria and beyond.

3.1 OUR ACTIVITIES

The participatory Rural Appraisal conducted in Nigeria revealed that the percentage of people with less than US \$1 per day is 70%. The above index shows that poverty and disability form a vicious circle in the country. RPF is out to contribute to the reduction of poverty and ignorance among the people in Nigeria. This can be achieved through her objectives;

- To reduce poverty among the community members and Nigerians at large through participatory based activities.

- To improve educational opportunities of the youths and middle aged, through the scholarship award.
- To improve agricultural activities, through improved farm inputs and farming method innovation.
- To improve economic independence of the youth and the elderly through our vocational training.
- To create awareness among the general populace on tourism, training on computer literacy, skill acquisition on food production and packaging.

The Foundation has taken some good steps to making her vision and mission come true by ensuring that a workable planning process is followed. Once a problem is identified, it is subjected to analysis such that the goals and objectives are formulated. Proposals are made and choices are selected while alternatives are forgone before implementation. The planning process is further explained in the chart below. This shall be a continuous project as the society keeps facing new challenges.

THE PLANNING PROCESS

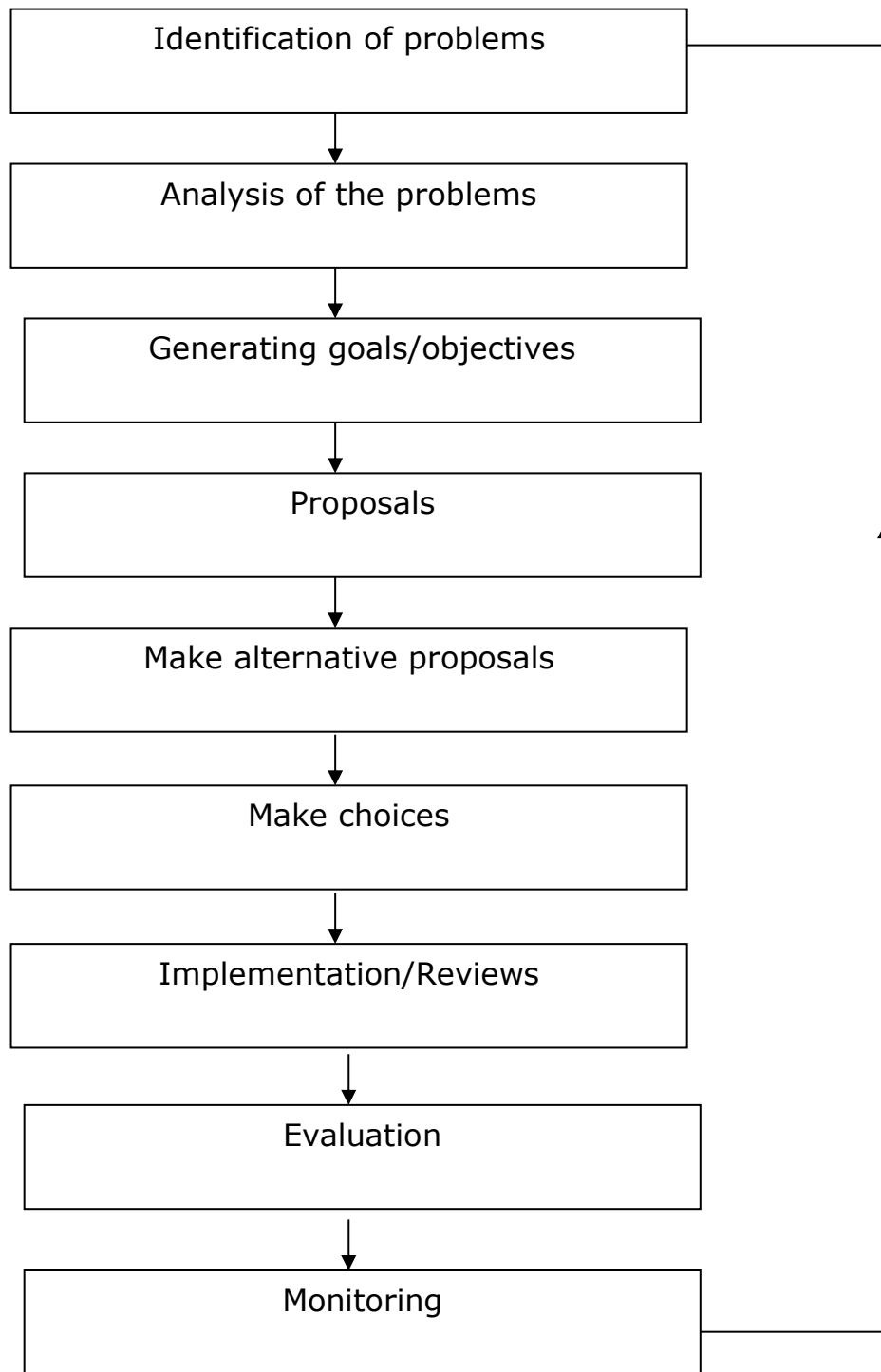


Fig 1.

- 1) IDENTIFICATION OF PROBLEMS:** RPF does not stumble into projects, and its implementation, we identify a particular problem facing a target population that need to be addressed. We follow a systematic approach assessing all possible causes and solutions coupled with challenges in implementation before we commence. This includes resource mobilization and expertise required.
- 2) ANALYSING THE PROBLEMS:** The problem is diagnosed and analyzed before the goals and objectives are formulated.
- 3) GOALS AND OBJECTIVES:** The goals are formulated and specific objectives to solving the problems spelt out.
- 4) MAKING PROPOSALS:** The solution to solving the problems is proposed and alternative proposals formulated using available and suitable index, after the analysis.
- 5) CHOICES:** Choices are made based on the results of the analysis and benefits to the host community.
- 6) IMPLEMENTATION OR EXECUTION:** The best option that will solve the identified problems is executed.

7) EVALUATION AND MONITORING: The implementation of any project is not the end of the project rather we evaluate and monitor it to the end. This then results in the formulation of the strategy for the next phase.

In this process of planning, RPF has formidable members of the board of trustees who play important roles in policy formulation.

Among the board members are:

- | | |
|----------------------------------|------------|
| 1. Sir (Dr.) Edward Nkwegu (KSJ) | Founder |
| 2. Lady Mary Nkwegu (LSJ) | CO-Founder |
| 3. Rev. Fr. John Paul Nwankwo | Chairman |
| 4. Rev. Sis. Jane Uzoeto | Secretary |
| 5. Rev. Fr. F. Nkama | Member |
| 6. Rev. Fr. Obijiofor Livinus | Member |
| 7. HRH Eze E. Nwojiji | Ex-Officio |

ORGANIZATIONAL STRUCTURE

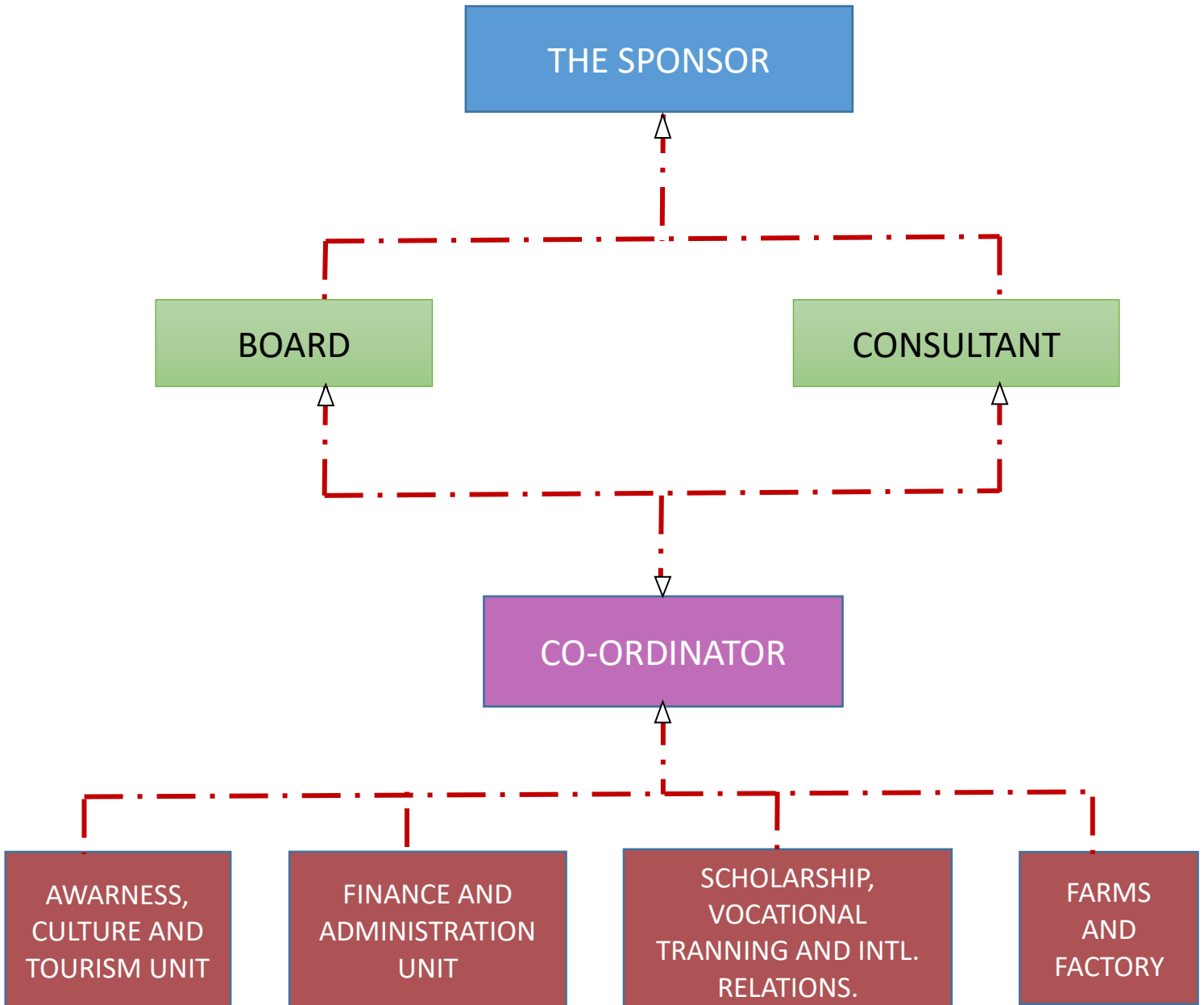


Fig 2.

The board members are responsible for policy matters, employment, constitution, condition of service etc. All the members meet every quarter with the founder, consultant and the coordinator. The coordinator who is an ex-officio member makes a progress report to the board in collaboration with the consultant. The coordinator acts as the secretary of the board and records the minutes of the meetings.

The coordinator supervises runs and directs the affairs of the Foundation through the heads of the departments. He inspects every unit activities, holds meeting with the board four times a year.

He gives progress report to the board. The months of meeting are March, June, September and December. He also holds meetings with the administrative and general staff at intervals.

3.3 STRENGTH, WEAKNESS, OPPORTUNITIES AND THREATS OF REGINA PACIS

The organization's assessment method of her activities and the environment is the strength, weakness, opportunities and threats (SWOT) analysis.

The result is as follows:

A. STRENGTHS

- ❖ Clear organizational structure
- ❖ Adequate training facilities
- ❖ Community projects
- ❖ Open door approach and policies
- ❖ Counseling and scholarship
- ❖ Library and educational facilities
- ❖ Practical farming
- ❖ Empowering the poor

B. WEAKNESSES

- ❖ Inadequate sustainable projects
- ❖ Inadequate personnel
- ❖ Lack of funding

- ❖ Lack of mobility
- ❖ Inadequate Remuneration

C. OPPORTUNITIES

- ❖ Availability of landed properties
- ❖ Good will and trade mark
- ❖ Democratization of present government.

D. THREATS

- ❖ Lack of electricity
- ❖ Illiteracy
- ❖ Low educational standard
- ❖ Bad road network

3.4 LEGAL STRUCTURE

Regina Pacis foundation is a non-governmental, non-profit making organisation, registered with the corporate affairs commission on 13th of November 2006 with RC number 674696. The liability of the members is limited by guarantee.

3.5 PRODUCT DESCRIPTION

Regina Pacis Foundation in a bid to achieve her objectives has the following products:

1. Agricultural products
2. Micro credit schemes
3. Provision of potable water and food security
4. Link between government, other donor agencies and the people in support of the less privileged in the society.
5. Tourism development and skill acquisition training.

The above products are also used as sources of funding for projects in poverty alleviation in the expansion plan.

1. AGRICULTURAL PRODUCTS

Regina Pacis has farm land for plantain plantation, cassava, rice field, fisheries and aquaculture, bee Hives and poultry. This project is a continuous project whose plan is to perfect it in the current locations and replicate it in all states of Nigeria as we expand our operations. We need to cover as many communities as capacity permits.

S/N	Product	Location	Area	Value (N)	No
1	plantain	Abakaliki	20 hectares	70m	5000 stands
2	Cassava	Abakaliki	15H	40m	20,000 stands
3	Rice	Ndioga	26H	36m	Numerous
4	Fish ponds	Ndioga Abakaliki Nwofe	10H	250m	200,000 fishes
5	Honey	Nwofe Abakaliki	10H	15m	100 Hives
6	Poultry	Nwofe Abakaliki	0.5H	4m	2,000 birds

Table 1

2. PLANTAIN PLANTATION: Plantain and banana are in the group of plant botanically called Musa Species. This product is used as food. The plantain could be processed into chips and exported. It is a good source of Iron to the body. The leaf and peel of the plantain are good forage for ruminant animals, and leaf also used as foil for bean cake (moi-moi) etc.

1. CASSAVA: Botanically called Manihot Species. It serves as food for man and animals. It can be exported as flour, garri and

starch for drug production. The use of cassava is numerous and can be grown all year round.

2. RICE: Rice is widely produced in Ebonyi State, popularly known as Abakaliki rice. RPF has the good species of rice field in many parts of the state. Rice is used as food, husk as source of fiber for animals feed and also as poultry liter in pens.



RPF Rice field at Ndioga Izzi LGA

Plate 1

3. FISH POND: RPF has large number of ponds for fish and aquaculture, measuring about 10 hectares of land. The fish ponds are located at Ndioga, Nwofe in Izzi LGA, Jim, Metu Street

in Abakaliki the Ebonyi State capital. The fish farms are fenced and secured against poachers or intruders. It has 12 numbers of Songhai modern round fish ponds measuring about 5m radius and 3m height each can house or accommodate about 3,000



table fish. RPF also has earthen ponds at Ndioga, rectangular ponds in Abakaliki as well as standard hatchery ponds.

Plate 2



4. MICRO CREDIT SCHEME:

RPF within the 20 years of active operation in Nigeria has operated and executed micro credit schemes in South East geo-political zone which is made up of five states. It has also worked with selected population in other geo-political zones of the Federation. The vision is to cover the whole Federation and beyond.

5. PROVISION OF PORTABLE WATER:

Regina Pacis Foundation in accomplishing her objectives has worked in partnership with White Cloud and Fremont Rotary club in America and sank motorized boreholes and hand driven water boreholes in many communities of the South Eastern Nigeria. The vision again is to cover the whole Federation.

6. TOURISM DEVELOPMENT AND SKILL ACQUISITION TRAINING

The tourism unit of Regina Pacis villa has developed a template for the development of tourism potentials of some communities. This will help preserve some artifacts facing extinction. We have zoological garden, serene environment, fully stocked library for

research, chapel for worship, recreational ground – Lawn Tennis Court, Table Tennis Court, Badminton Court and Historical and Cultural Artifacts.

The vision here is to replicate the model in all states and promote domestic tourism in Nigeria. We would like to use the model to provide employment to local indigenes as well boost multicultural exposures thorough domestic tourism which will act as a peace building initiative amongst various ethnic groups in Nigeria.

This will promote peace in the whole Federation. Where there is peace development follows and lives of humanity is improved which is the goal and vision of RPF.

RPF also has a magnificent food industrial factory for skill acquisition and training. In this food factory, garri, wheat flour, plantain flour is processed and also table water.



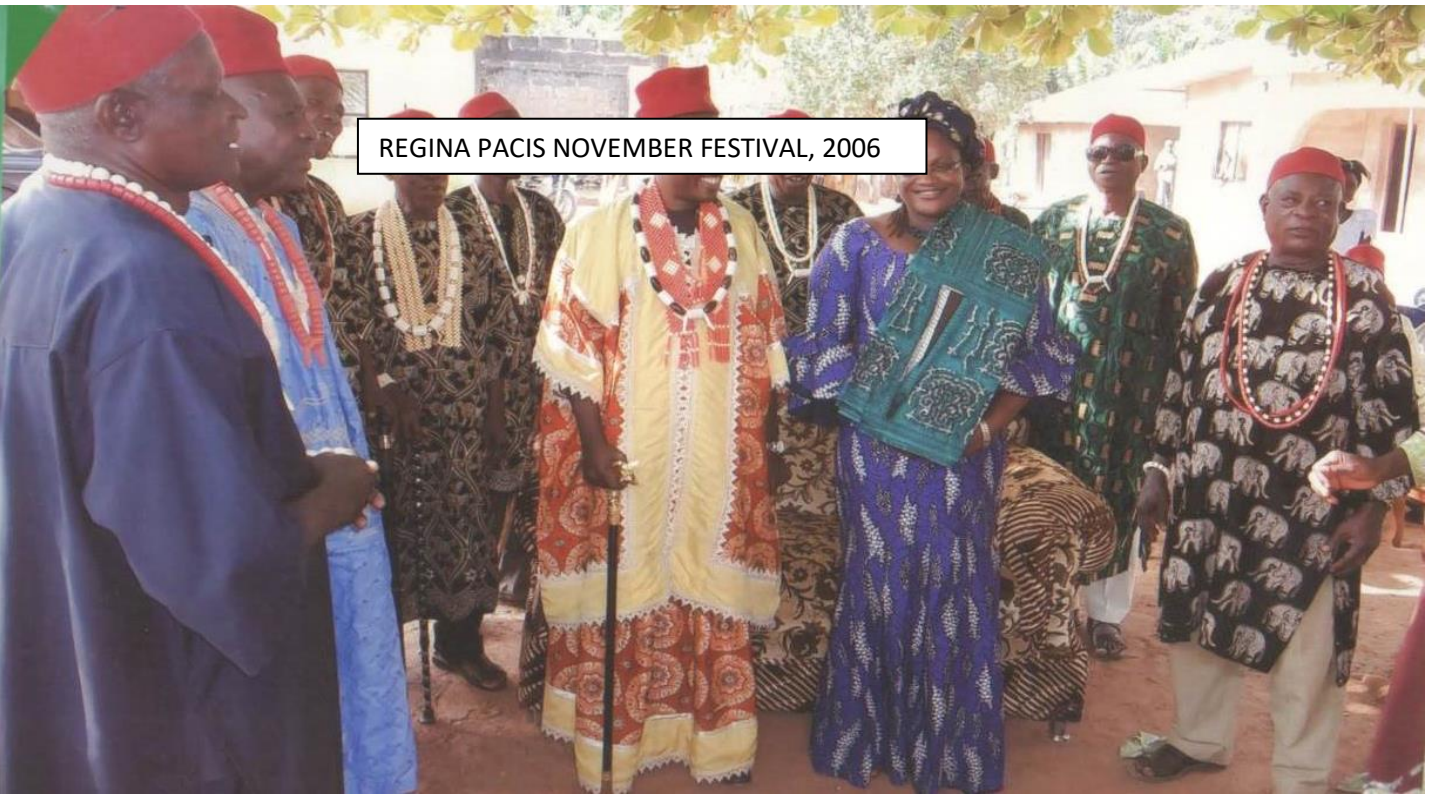
Plate 3. **Coporate Headquarters**

The annual, 7days festival that showcases all her tourism development facilities, usually in the month of November is clear evidence of her tourism development. The festival showcases, competition of different kinds such as dancing, football, and other indoor games etc.

REGINA PACIS NOVEMBER FESTIVAL, 2006



REGINA PACIS NOVEMBER FESTIVAL, 2006



3.6 INTELLECTUAL PROPERTY DESCRIPTION

The organization is registered with trade mark as shown in our cover page. Regina Pacis has a good will that cannot be measured it is a household name in Nigeria.

3.7 LOCATION/POPULATION

Location: RPF has her Corporate Headquarters located at Okpoduma, Nwofe in Izzi Local Government Area of Ebonyi State Nigeria. Ebonyi State is bounded at the North by Benue State, at the South by Abia, at the East by Cross River State and at the West by Enugu State.

The choice for location of Regina Pacis headquarters is such that it will accommodate all the needed facilities like food factory, zoological garden, library, and farm. There is availability of land to house all the facilities.



MAP OF NIGERIA WITH EMPHASIS ON EBONYI STATE

3.7.1 POPULATION

The Population of an area aid in planning and execution of viable projects. The 2006 population census figure of the country is about 140 million distributed as shown in the table below:

South-East				
	Male	Female	Total	% of the Nation
<u>Abia</u>	1,434,193	1,399,806	2,833,999	2.02%
<u>Anambra</u>	2,174,641	2,007,391	4,182,032	2.99%
<u>Ebonyi</u>	1,040,984	1,132,517	2,173,501	1.55%
<u>Enugu</u>	1,624,202	1,633,096	3,257,298	2.33%
<u>Imo</u>	2,032,286	1,902,613	3,934,899	2.81%
SubTotal	8,306,306	8,075,423	16,381,729	11.70%

South-South				
	Male	Female	Total	% of the Nation
<u>Akwa-Ibom</u>	2,044,510	1,875,698	3,920,208	2.80%
<u>Bayelsa</u>	902,648	800,710	1,703,358	1.22%
<u>Cross-River</u>	1,492,465	1,396,501	2,888,966	2.06%
<u>Delta</u>	2,074,306	2,024,085	4,098,391	2.93%
<u>Edo</u>	1,640,461	1,577,871	3,218,332	2.30%
<u>Rivers</u>	2,710,665	2,474,735	5,185,400	3.70%
SubTotal	10,865,055	10,149,600	21,014,655	15.01%

South-West				
	Male	Female	Total	% of the Nation
<u>Ekiti</u>	1,212,609	1,171,603	2,384,212	1.70%
<u>Ogun</u>	1,847,243	1,810,855	3,658,098	2.61%
<u>Ondo</u>	1,761,263	1,679,761	3,441,024	2.46%
<u>Osun</u>	1,740,619	1,682,916	3,423,535	2.45%
<u>Oyo</u>	2,809,840	2,781,749	5,591,589	3.99%
<u>Lagos</u>	4,678,020	4,335,514	9,013,534	6.44%
SubTotal	14,049,594	13,462,398	27,511,992	19.65%

North-Central				
	Male	Female	Total	% of the Nation
Benue	2,164,058	2,055,186	4,219,244	3.01%
Kogi	1,691,737	1,566,750	3,258,487	2.33%
Kwara	1,220,581	1,150,508	2,371,089	1.69%
Nasarawa	945,556	917,719	1,863,275	1.33%
Niger	2,032,725	1,917,524	3,950,249	2.82%
Plateau	1,593,033	1,585,679	3,178,712	2.27%
SubTotal	9,647,690	9,193,366	18,841,056	13.46%

North-East				
	Male	Female	Total	% of the Nation
Adamawa	1,606,123	1,561,978	3,168,101	2.26%
Bauchi	2,426,215	2,250,250	4,676,465	3.34%
Borno	2,161,157	1,990,036	4,151,193	2.97%
Gombe	1,230,722	1,123,157	2,353,879	1.68%
Taraba	1,199,849	1,100,887	2,300,736	1.64%
Yobe	1,206,003	1,115,588	2,321,591	1.66%
SubTotal	9,830,069	9,141,896	18,971,965	13.55%

North-West				
	Male	Female	Total	% of the Nation
Jigawa	2,215,907	2,132,742	4,348,649	3.11%
Kaduna	3,112,028	2,954,534	6,066,562	4.33%
Kano	4,844,128	4,539,554	9,383,682	6.70%
Katsina	2,978,682	2,813,896	5,792,578	4.14%
Kebbi	1,617,498	1,621,130	3,238,628	2.31%
Sokoto	1,872,069	1,824,930	3,696,999	2.64%
Zamfara	1,630,344	1,629,502	3,259,846	2.33%
SubTotal	18,270,656	17,516,288	35,786,944	25.56%

Table 2

Table 2 above shows the population of Nigeria according to the 2006 population census.

According to the census figure displayed above, Nigeria has 68,292,683 women as against 71,709,859 men. RPF has proposed to work with about 20% of the population of women in the Federation, which is about 13.7million in the (6) Six geo-political zones of the country.

In the first phase of the project known in Regina Pacis Foundation as vision 2017-2023 women empowerment scheme, she proposed to start with 1.2million women in 12 states of the federation and the remaining numbers subsequently. The foundation has proposed 100,000 active poor women in the following states. Abia, Anambra, Ebonyi Enugu, Imo, Akwa Ibiom, Cross River, Delta, Ogun, Ondo, Benue and Kogi State.

a. **MANAGEMENT AND PERSONNEL**

The top management staff of the organization includes:

1. The Coordinator
2. The General Supervisor
3. The Accountant
4. The Auditor
5. The Procurement Officer
6. The Marketing Officer
7. Administrative/Logistics Officer

The above listed top management staff, are well experienced with track records of success in project implementation.

3.9 RECORDS Information about the organization can be accessed through any of the management staff. The record keeping method adopted by the organization is standard and internationally accepted. However, our records are well secured in shelves,

system and drawers under lock and key, to prevent access by unauthorized persons.

3.91 INSURANCE

Insurance for Regina Pacis include property damage, flood and other natural disaster policies, Death and life insurance policies. Some of the workers are volunteer staffs who has the interest of the poor at heart.

3.9.2 LITIGATION

The organization has not had any court case with anybody or organization and does not envisage that in the near future as alternative dispute resolution is seriously encouraged. The organization has legal department headed by a legal practitioner.

3.9.3 RISK FACTORS Regina Pacis Foundation in its operation has some form of risks that face the organization. These risks include:

- Loan repayment
- Death of beneficiaries
- Flood and other natural disasters.

4.0 COMPETITION

The micro credit scheme of RPF is not comparable to any other, the farm products are natural (organic) and have no negative effects on man. The prices of our products are low and affordable to all. Humanitarian services are vast enough to accommodate all who care to lend helping hands.

4.1 DISTRIBUTION AND SALES

RPF's products are distributed to all parts of the country, to individuals, corporate organizations and government agencies. Our packaged food includes but not limited to garri, plantain flour, wheat flour and rice. The prices of these items are affordable and equitably distributed to reach all the targeted population.

Our micro credit product is always distributed in piece meal, which is why we propose a nationwide micro-credit to begin with (12) states of three of the geo-political zones at first phase, though we hope to cover the whole country as we progress.

4.2 MARKETING STRATEGIES

Advertising and display of products: The products of RPF are advertised through the media (radio programs, prints and person to person). The radio programs run in both local and national stations. While the print media run through the other media like newspapers and magazines.

RPF's yearly thanksgiving is a good avenue, to show case our good products to the public. This is because visitors, friends and the general public come from all the geo-political zones of the nation for this event.

RPF's promotional strategy will also help in marketing our products.

